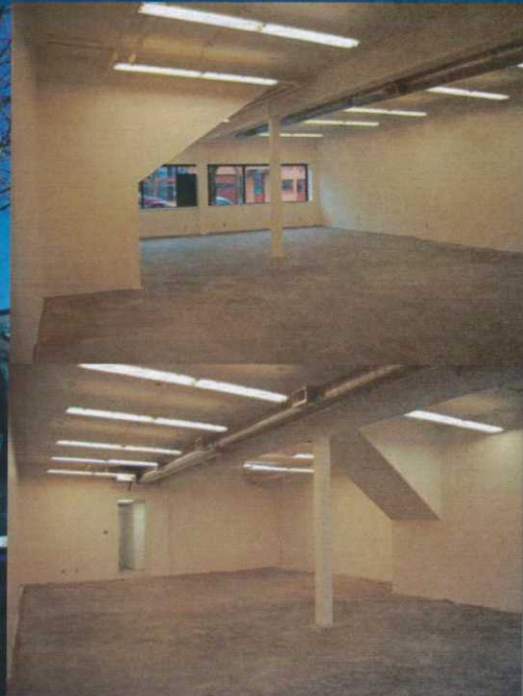


GIBBS BUILDING

Street Retail // Mixed-Use Building // DT Olympia

112 NE State Street, Olympia, WA 98501

FOR
LEASE



Highlights

- › **\$10 psf Modified Gross**
- › 2,200 SF ground floor suite with 3 reserved parking stalls.
- › Finished, clean, open floor plan with a few built out offices in the rear.
- › Ideal use as restaurant, retail, sales floor, showroom, assembly, and or office space.
- › Excellent frontage along State St in the hear of downtown.
- › Centrally located adjacent waterfront boardwalk, public transportation & all downtown's amenities.



Contact

Ryan Clintworth, Designated Broker

360 539 7590 **office** | 480 203 8483 **mobile**

rclintworth@gmail.com



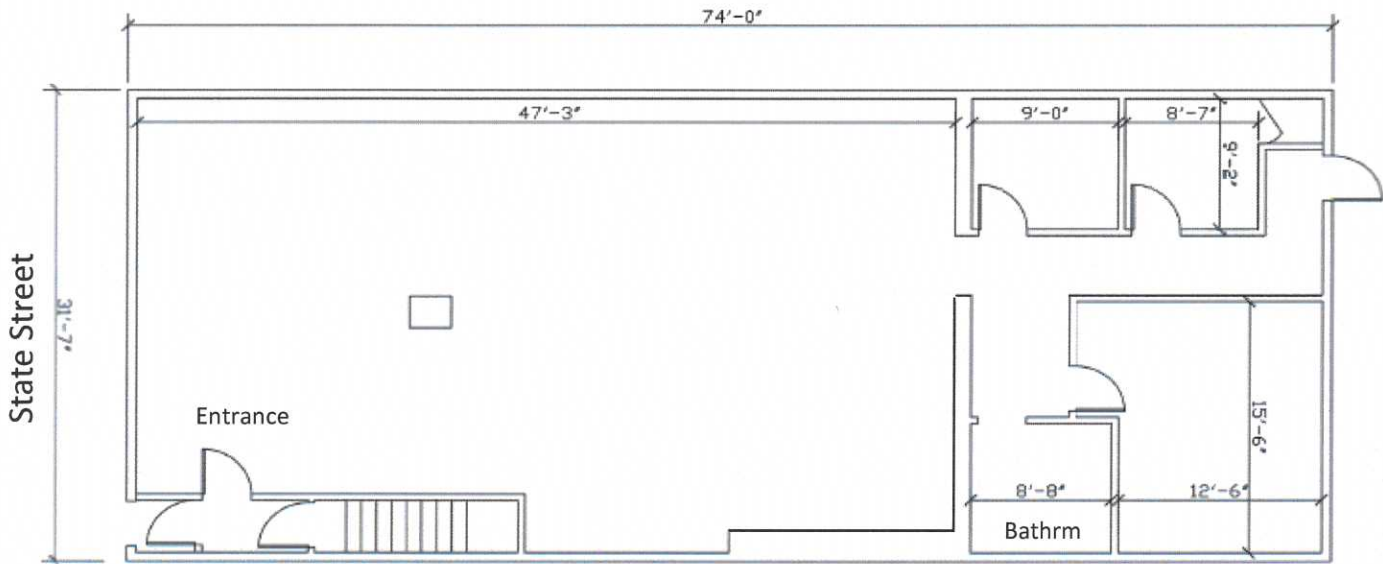
The information supplied herein is from sources we deem reliable. It is provided without any representation, warranty or guarantee, expressed or implied, as to its accuracy.

GIBBS BUILDING

Street Retail // Mixed-Use Building // DT Olympia

112 NE State Street, Olympia, WA 98501

FOR LEASE



Main Floor

2,200 sq ft

Contact

Ryan Clintworth, Designated Broker

344 Cleveland Avenue, Suite C | Olympia, Washington | 98501

360 539 7590 **office** | 480 203 8483 **mobile** | rclintworth@gmail.com



CLINTWORTH
Real Estate Partners

The information supplied herein is from sources we deem reliable. It is provided without any representation, warranty or guarantee, expressed or implied, as to its accuracy.