



For Sale



Three units totaling $\pm 7,089$ SF, located on one of the busiest corners in Downtown Olympia

The Walker Building is listed on the Olympic Heritage Register

First level (retail):

Acqua Via restaurant, $\pm 1,900$ SF

Psychic Sister, $\pm 1,400$

Second level (office):

MSG Architects, $\pm 3,390$ SF

\$1,275,000

kiddermathews.com

Contact

Evan Parker
360.705.0174
eparker@kiddermathews.com

Terry Wilson
360.705.1296
twilson@kiddermathews.com

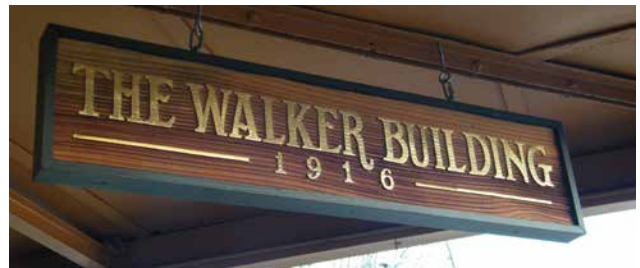
The Walker Building

500 Capitol Way S, Olympia, WA



DEMOGRAPHICS

	1 mile	3 miles	5 miles
Population	8,502	59,179	113,931
Total Households	4,472	26,190	48,528
Average Household Income	\$57,542	\$71,990	\$73,807



TRAFFIC VOLUMES

Collection Street	Cross Street	Traffic Volume	Year
Capitol Way S	5th Avenue SW	8,562	2012
4th Avenue E	Washington Street SE	12,991	2012

Contact

Evan Parker
360.705.0174
eparker@kiddermathews.com

Terry Wilson
360.705.1296
twilson@kiddermathews.com

kiddermathews.com

This information supplied herein is from sources we deem reliable. It is provided without any representation, warranty or guarantee, expressed or implied as to its accuracy. Prospective Buyer or Tenant should conduct an independent investigation and verification of all matters deemed to be material, including, but not limited to, statements of income and expenses. Consult your attorney, accountant, or other professional advisor.

