



## 1001 Eastside St SE, Olympia Fully Serviced Office Suite

- **\$1,000/month fully serviced**
- **650±Square Feet**
- **Ample parking**

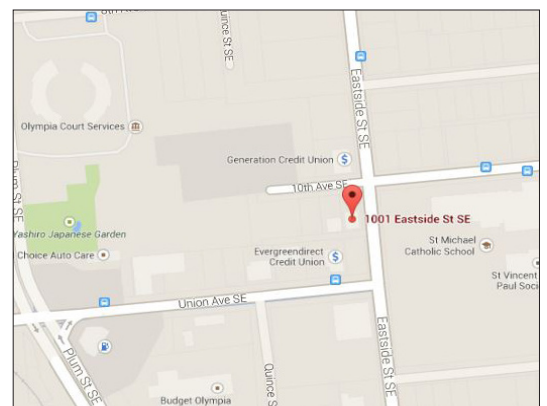
Great office location and layout. Divided office space with entryway reception area, large main office area with additional private office or conference room. Shared lunch room and restrooms with long standing tenants. Ideal for lawyer, accountant, lobbyist, massage or therapist. High traffic location with great frontage on Eastside St. Just blocks from I-5.

### FOR MORE INFORMATION PLEASE CONTACT

**Quint Newell**

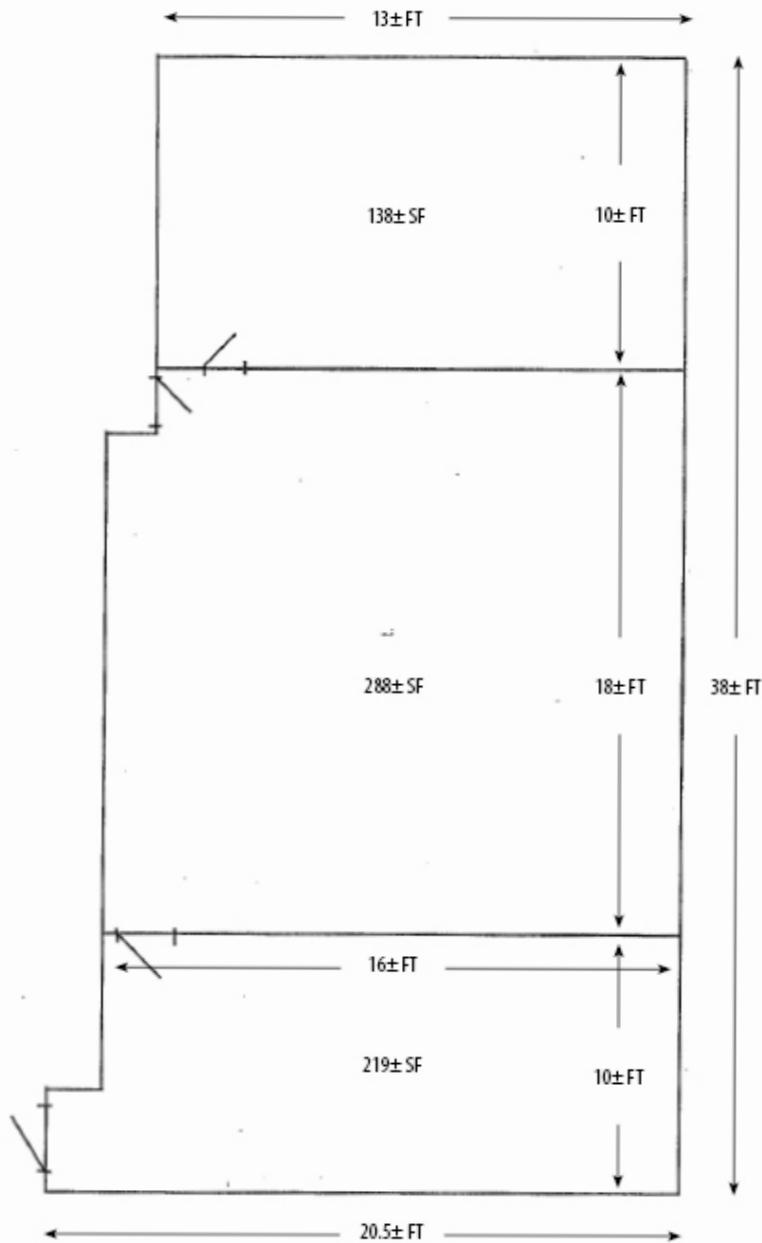
360.688.8333 direct

[quint@greenecommercial.com](mailto:quint@greenecommercial.com)



[www.greenecommercial.com](http://www.greenecommercial.com)

# For Lease



FOR MORE INFORMATION PLEASE CONTACT

**Quint Newell**

360.688.8333 direct

[quint@greenecommercial.com](mailto:quint@greenecommercial.com)